



Lung
Cancer
Screening

Humber and North Yorkshire Lung Cancer Screening

Communication Toolkit





Lung Cancer Screening is soon to be offered in your area. The Lung Cancer Screening programme aims to help diagnose lung cancer and other respiratory diseases earlier, when treatment may be simpler and more successful. Detecting more cancers early is a key element of the [NHS Long Term Plan](#), with an ambition that 55,000 more people each year will survive their cancer for at least five years by 2028.

The Lung Cancer Screening programme (previously known as the NHS Targeted Lung Health Check programme) launched in Humber and North Yorkshire in January 2020 and since then over 50,000 participants have attended. This programme has helped to identify cancer and respiratory diseases at an early stage and provided opportunities for earlier treatment that has saved lives.

Hull was selected as one of 10 sites in England to be the first to implement the NHS Targeted Lung Health Check programme, due to its high prevalence of smoking and high lung cancer mortality rate.

Since then, the programme has rolled out to North East Lincolnshire, East Riding of Yorkshire and North Lincolnshire. From 2026, Lung Cancer Screening will start in your area and eligible participants will be invited gradually.

Eligible participants will receive a letter inviting them to take part in a telephone assessment with a specialist respiratory nurse. Those with a high-risk score will be invited to attend a low-dose CT scan within 4 weeks of their initial appointment, which will take place on board a mobile CT unit based in locations within their local area.

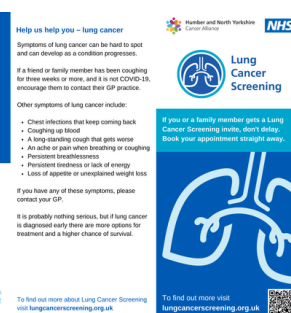
Results are expected to be received within four weeks, with further action taken if necessary. Any participants who currently smoke will be offered support to quit, should they wish to do so, and all participants will be given a full range of information to support them through the service.



Further information, including a list of GP practices currently sending out invites and the location of the mobile unit, can be found at lungcancerscreening.org.uk.

To help you raise awareness of the Lung Cancer Screening programme, we have created a range of materials, which include:

- Key messages
- Digital resources
- Social media resources
- Website and newsletter copy
- Frequently asked questions
- Posters
- Leaflets



To support the programme you can:

- Display and distribute materials
- Use our range of digital and social resources on your social media and communication channels
- Follow Humber and North Yorkshire Cancer Alliance on [Facebook](https://www.facebook.com/hnycanceralliance) and [X](https://twitter.com/hnycanceralliance) and re-share posts regarding the Lung Cancer Screening programme
- Publish the article copy on your intranet/website and in any newsletters
- Discuss Lung Cancer Screening with friends, family and colleagues

The materials in this toolkit are suitable for immediate use. Posters and leaflets are available to order by emailing comms.hnycanceralliance@nhs.net.



Below are the key messages to use when raising awareness of the Lung Cancer Screening programme. Please include these messages in any social media posts, articles, newsletters or when discussing the programme with friends, colleagues, or members of the public.

- There are often no signs or symptoms of lung cancer at an early stage. As a result, sadly around 7-in-10 cancer patients are currently being diagnosed too late.
- Most lung cancers grow slowly enough for them to be found at an early stage by a lung scan. When lung cancer is diagnosed early, there are more options for treatment and a higher chance of survival.
- The Lung Cancer Screening programme helps find problems early (often before you notice anything is wrong) and at a stage when treatment could be simpler and more successful – ultimately saving more lives.
- Lung Cancer Screening is offered to people aged 55 to 74 who are current or former smokers. If someone is eligible for Lung Cancer Screening they will receive a letter from their GP practice inviting them to make an appointment.
- Lung Cancer Screening consists of a telephone assessment and some participants may be invited to attend a low-dose CT scan after their initial telephone appointment.
- Approximately only 2-in-100 people checked will be diagnosed with lung cancer. If you are diagnosed, attending an appointment could save your life.
- It is important to attend a Lung Cancer Screening appointment even if you feel fine, as some conditions do not display symptoms until later stages.
- If you or someone you know is experiencing symptoms of lung cancer, do not wait to be invited to a Lung Cancer Screening appointment to see a healthcare professional. Instead, get in touch with your GP practice.



Mobile units



After an initial telephone assessment, participants with a high risk score will be invited to have a low-dose CT scan on board a mobile unit. The unit will be operating in easily accessible community locations. More information on locations and accessing the unit can be found at www.lungcancerscreening.org.uk.





On the following pages, you will find images and suggested copy for posts that you can use on your social media channels. These images and others are available as jpegs to download in the toolkit folder.

Please feel free to write your own social media posts, but don't forget to:

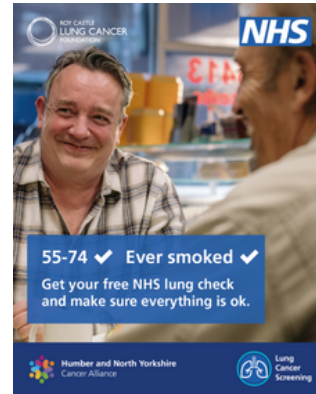
- Use the key messages outlined in this toolkit
- Follow us on [Facebook](#) and [X](#) and re-share our social media posts





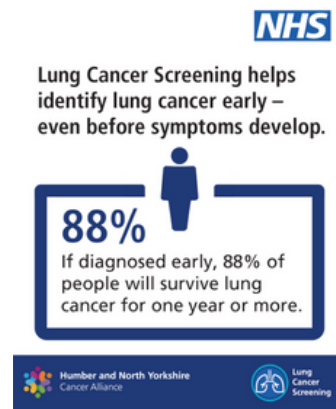
Are you a current or former smoker?
Aged 55 to 74?
Registered with a local GP practice?
You will be eligible for a Lung Cancer Screening appointment.
If you receive an invitation, book your appointment today.

Image: LCS8



Lung Cancer Screening is now taking place in your area. If you have received an invitation for a Lung Cancer Screening appointment, you can find everything you need to know at www.lungcancerscreening.org.uk.

Image: LCS2



It is important to book your Lung Cancer Screening appointment even if you feel fine. There are often no early symptoms of lung cancer, so an appointment can help to find any problems early – often before you notice anything is wrong.
Find out more at www.lungcancerscreening.org.uk.

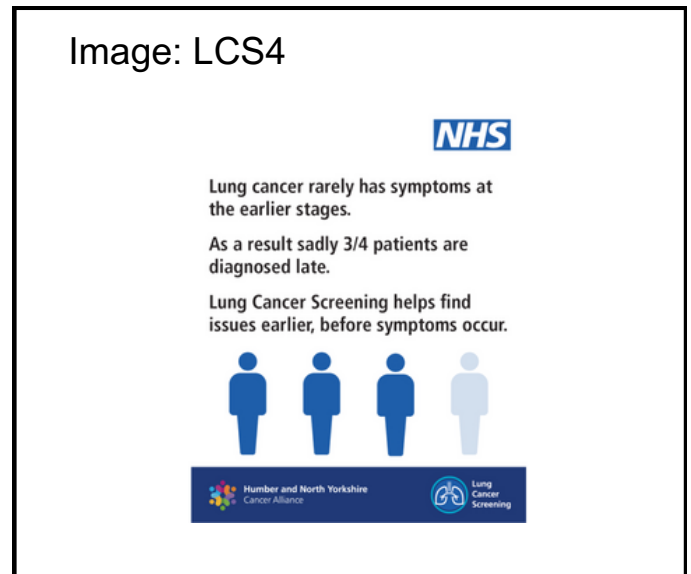
Image: LCS3





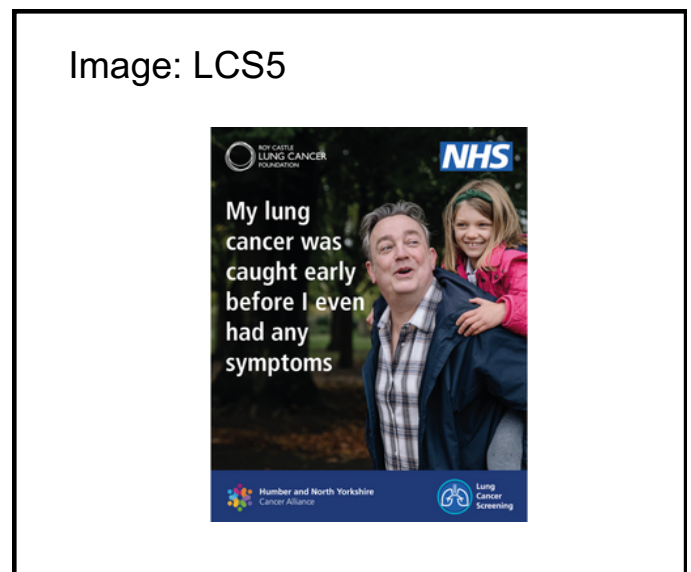
Are you a current or former smoker?
Aged 55 to 74?
Registered with a local GP?
You may be eligible for a Lung
Cancer Screening appointment.
If you receive an invitation, book your
appointment today. #LCSInNY

Image: LCS4



The Lung Cancer Screening programme has now started to invite eligible participants in your area. Find out everything you need to know about Lung Cancer Screening at www.lungcancerscreening.org.uk.

Image: LCS5



It is important to book your Lung Cancer Screening appointment, even if you feel fine. Lung cancer often does not display symptoms until a later stage and if caught early, treatment could be simpler and more successful. To find out more, visit www.lungcancerscreening.org.uk.

Image: LCS6





People living in your area are now being invited for Lung Cancer Screening.

If you are a smoker or an ex-smoker, aged 55 to 74, your GP may invite you for an appointment, Find out more at www.lungcancerscreening.org.uk.

LCS7



If you are a current or former smoker aged between 55 and 74, you will receive a letter inviting you for a Lung Cancer Screening appointment.

To find out more about Lung Cancer Screening visit www.lungcancerscreening.org.uk.

LCS8



The Lung Cancer Screening programme helps us get ahead of lung cancer – before symptoms even start.

If you are invited for a Lung Cancer Screening appointment, make sure you book yours – even if you are feeling well.

To find out more, visit www.lungcancerscreening.org.uk.

LCS9





This copy can be used alongside the images included in the toolkit and across a range of channels, including websites, e-bulletins, newsletters and social media.

Free Lung Cancer Screening appointments available to eligible people in your area

The Lung Cancer Screening programme, which is helping to save lives through earlier diagnosis of lung cancer and other conditions, is now being offered to eligible participants living in your area.

Lung Cancer Screening can help identify lung cancer and other respiratory diseases early, often before symptoms occur and when treatment could be more successful.

Past and current smokers, aged between 55 and 74, are being invited in phases and eligible participants who live in your area and are registered with a GP practice will be invited for a Lung Cancer Screening appointment. They will receive a letter inviting them to book a telephone assessment with a specially trained respiratory nurse.

Following the telephone assessment, participants may be invited for a low-dose CT scan onboard a high-tech mobile unit.

Dr Stuart Baugh, Programme Director for the NHS Lung Cancer Screening programme in Humber and North Yorkshire said: “The Lung Cancer Screening programme is a vital step towards better outcomes for people at highest risk of respiratory diseases.

“Not only does it help to provide most people with reassurance that their lungs are currently healthy, it also helps to detect any lung conditions early and supports people to stop smoking if they wish to do so.

“The programme first launched in Hull in January 2020 and since then eligible participants from North and North East Lincolnshire, as well as the East Riding of Yorkshire, have been invited. As we continue to roll out the service across Humber and North Yorkshire, we are pleased to continue the process for participants in your area.”

Find out more about Lung Cancer Screening at www.lungcancerscreening.org.uk.

**What is Lung Cancer Screening?**

The Lung Cancer Screening programme is an MOT for your lungs and will check that they are working as they should be. Many people find their lungs are okay, but for some, a lung cancer screening appointment can help find any problems early and at a stage when treatment can be simpler and more successful.

Who is eligible for Lung Cancer Screening?

Past and current smokers who are aged between 55 and 74, live in your area, and are registered with a local GP practice, are eligible for a Lung Cancer Screening appointment.

Eligible participants will receive a letter inviting them to book a telephone assessment with a specialist nurse. Some people will receive invitations before others. This is due to the service being delivered in phases across the area.

Why have I been sent an appointment letter?

If you have received a Lung Cancer Screening invitation letter, you may be more at risk of problems with your lungs due to your age and smoking status. It is important to book your Lung Cancer Screening appointment as soon as possible, as it could spot any problems with your lungs before you know they are there.

I do not have any symptoms, should I still have a Lung Cancer Screening appointment?

Some conditions, such as lung cancer, do not display any symptoms until a later stage. If problems are spotted early, treatment could be simpler and more effective. If you are invited for a Lung Cancer Screening appointment, it is important you book yours as soon as possible.

What happens during a Lung Cancer Screening appointment?

The telephone appointment will last approximately 25 minutes and the nurse will ask you some questions about your breathing and overall lung health. They will also ask about your lifestyle, family, and medical history. Anyone showing a higher risk score will then be offered a low-dose CT scan on board a mobile unit. The current location of the unit can be found at the website lungcancerscreening.org.uk.

**I'm under 55. Why can't I have Lung Cancer Screening?**

Currently, the Lung Cancer Screening programme is for people aged 55 to 74 who have ever smoked. Lung Cancer Screening is proven to be beneficial in medical research for this age group. We do not have enough evidence of a definite benefit for people below this age. However, anyone can get lung cancer, so if you have any concerns, or are experiencing symptoms, contact your GP immediately.

I'm over 74. Why can't I have Lung Cancer Screening?

The main concern is that the risks from treatment and other medical conditions begin to outweigh the benefits of screening from 75 years and over. However, you should contact your GP immediately if you have lung cancer symptoms or any concerns.

Why is Lung Cancer Screening not offered to people who have experienced passive smoking?

Currently, Lung Cancer Screening is for people aged 55 to 74 who have ever smoked. This is because they are at a higher risk of lung cancer or lung disease than people who have never smoked. This is based on medical research. Research to show benefits in other settings, such as those who have never smoked, have smoked low amounts, or who have experienced passive smoking, is not yet available.

Why is Lung Cancer Screening only available to people who have smoked?

People who have smoked are at higher risk of lung disease or lung cancer than people who have never smoked.

There is a history of lung cancer in my family, so can I be tested?

There is currently no proof that an inherited risk of cancer alone can reliably inform who is more at risk of having lung cancer. Smoking history is proven to be the best measure for identifying who should have a Lung Cancer Screening appointment, because former and current smokers are more likely to develop lung cancer. However, family history is taken into account in the Lung Cancer Screening assessments.

I've quit smoking so why do I need to go?

Well done for successfully quitting smoking. In doing so, you have reduced your risk of getting lung cancer. However, you still have a higher risk of lung cancer than someone who has never smoked, so you should still attend your appointment.

**What happens at the mobile unit?**

You will receive a low-dose CT scan. The scan, which only takes a few seconds, will look for early signs of lung cancer and other respiratory diseases. Your height and weight will be checked by the nurse.

The total time onboard the mobile unit will be around 30 minutes. You can ask any questions either before, during or after the CT scan. More information can be found in the participant leaflet, which is available at lungcancerscreening.org.uk.

Is there support for people with a learning disability?

Yes, there is an [Easy Read leaflet](#) available. In addition, extra time can be allocated to appointments and you can also bring someone else to the appointment with you.

Please discuss any additional needs when making your Lung Cancer Screening appointment with the booking team.

Does the vehicle have wheelchair access?

Yes, there is a lift on the unit for those who require it.

I have been invited for a CT scan; how do I find my local unit?

Mobile units are located at convenient community locations, such as supermarkets and sports venues, where there's also parking. Information as to how to find your local unit and get there is available at lungcancerscreening.org.uk.

I am eligible for the non-emergency patient transport service. Will I still be able to book this for my Lung Cancer Screening appointment?

Yes. If you are eligible for this service, please book your transport to your Lung Cancer Screening appointment in the usual way.

Can I bring someone to my appointment?

Please let us know if you have any additional needs at the time of booking the CT scan and we will do our best to accommodate you.

**What if I am scared of what they might find at the appointment?**

It is completely understandable if you are nervous of having a Lung Cancer Screening appointment, but it is really important that you go.

You can request that someone comes with you to the appointment, such as a family member or friend. The chances are everything will be OK, but if it is lung cancer, catching it early can make all the difference.

Do I have to get undressed if I need a CT scan?

You may need to remove your coat, but you can leave your clothing and shoes on. If you are someone who wears a bra, please wear one without underwire and please attend your appointment wearing a plain top (no zips, metal buttons or sequins).

What happens after a Lung Cancer Screening appointment?

Should anything be identified either during the discussion with a nurse or during the CT scan, then dependent upon what this is, you will be contacted by telephone or letter with the next steps (usually within four weeks). If you have any worries about this, you can speak to the nursing professionals in the booking team.

How is the Lung Cancer Screening programme being paid for?

The programme is funded by NHS England and part of the national NHS ambition to improve early diagnosis and survival rates for those diagnosed with cancer.

Is the information available in other languages?

The patient booklet is available in other languages on request. All information on the website can be translated into a number of languages at the touch of a button. People can request translation and interpretation services for their appointment through the telephone booking service. There is also an [Easy Read leaflet](#) available online.

Why are some people in my area receiving the invitations before others?

The Lung Cancer Screening programme is being delivered in phases and all eligible residents will be invited to take part as the service moves around the region. You can find out who has already started to get their invitations at lungcancerscreening.org.uk.



If you are worried about a symptom of lung cancer, please do not wait until you are invited for a Lung Cancer Screening appointment. Contact your GP as soon as possible.

I smoke and am outside the target age range, why can't I get an appointment?

This is a Lung Cancer Screening programme for people who are at the greatest risk of developing lung problems, including lung cancer at a future stage. As with most screening programmes for people who are asymptomatic (displaying no symptoms) the resources are targeted at the people most at risk. The people most at risk of developing lung problems, including lung cancer, are aged between 55 and 74, who smoke or used to smoke. However, anyone who is worried about any of the above symptoms should see their GP as soon as possible.

If you have any additional queries please email: hnyicb-ery.lunghealth@nhs.net



Thank you for supporting the
Lung Cancer Screening programme
in Humber and North Yorkshire

For any communications questions, email:
comms.hnycanceralliance@nhs.net

www.lungcancerscreening.org.uk

